

9900 - 78TH STREET

PEACE RIVER, ALBERTA

780-624-2720

THOMAS

HOMES & RV CENTER



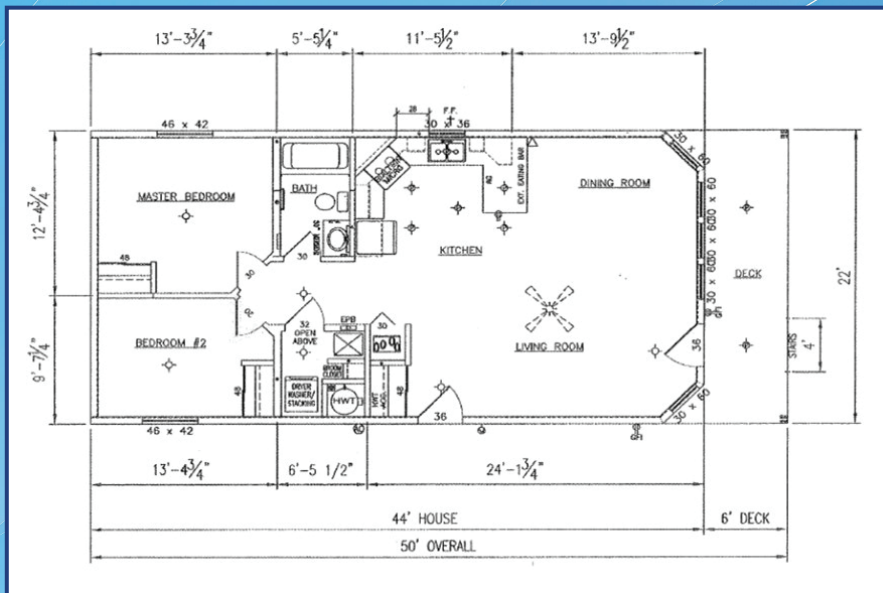
SAVE \$5000 ON ANY HOME ORDERED BEFORE MAY 31ST
USE THE CREDIT TOWARDS OPTIONS, SKIRTING, DECKS, OR DISCOUNTS!

2025
SPRING SALE

WWW.THOMASHOMESANDRV.COM

SAVE \$5000 ON ANY HOME ORDERED BEFORE **MAY 31ST**
 USE THE CREDIT TOWARDS OPTIONS, SKIRTING, DECKS, OR DISCOUNTS!

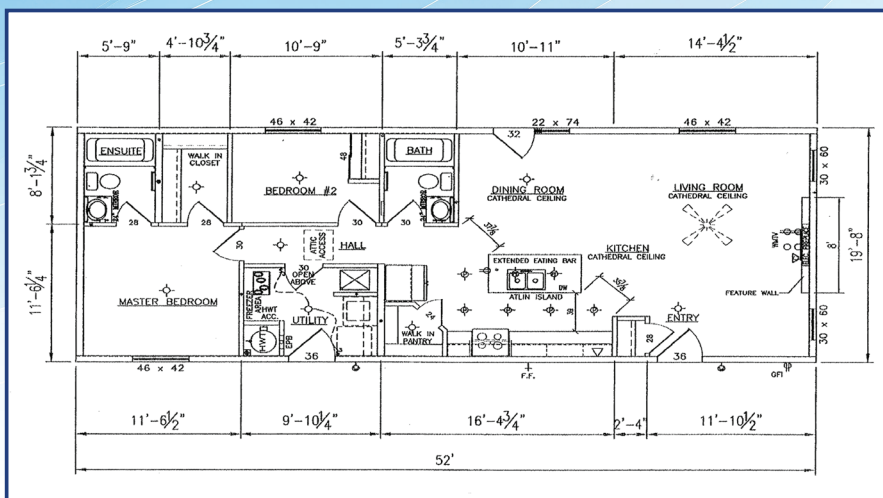
SHOWHOME #1 PEPPERIDGE 22'x50'
 968 SQ.FT. 2 BEDROOM/1 BATH



This home features a large front covered veranda perfect for enjoying the outdoors, and an open concept front living area with lots of front facing windows.



SHOWHOME #2 CJS 20'x52'
 1040 SQ.FT. 2 BEDROOM/2 BATH



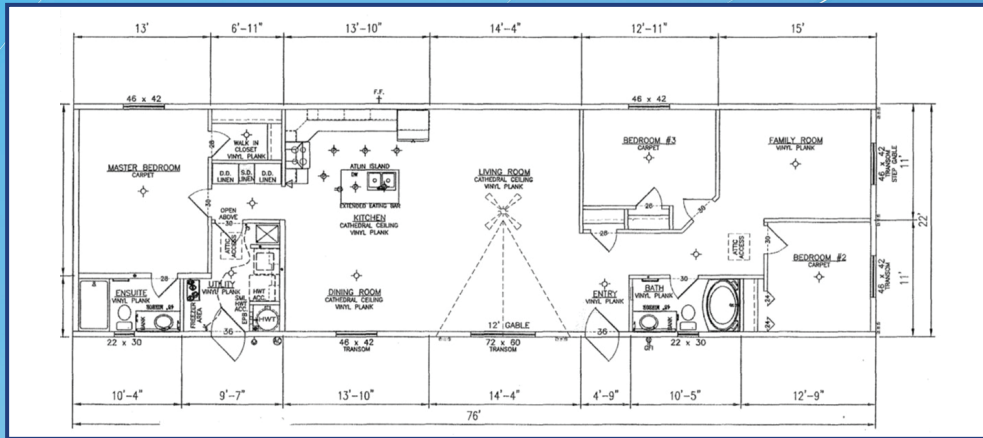
This home features a front Living Room, Dining and Kitchen with a Barn Wood feature wall and an electric fireplace. Spacious kitchen for a 1040 SQ.FT. home with Walk in Pantry and Island for all your storage needs.



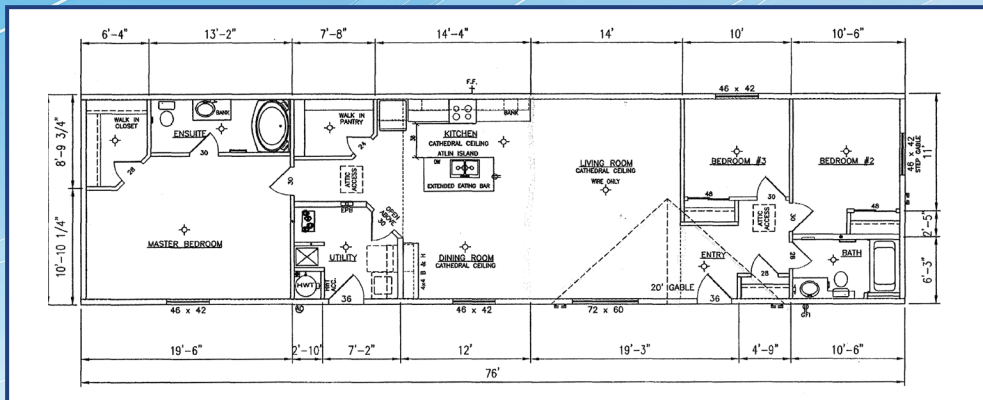


ALL NEW SHOWHOMES ON DISPLAY MUST GO

SHOWHOME #3 CJS-2216 22'x76' 3 BEDROOM/2 BATH WITH FAMILY ROOM



SHOWHOME #4 SII-234 20'x76' 3 BEDROOM/2 BATH



BEST PRICE GUARANTEE

WE WILL MEET OR BEAT ANY
COMPETITORS PRICE ON
COMPARABLE PRODUCTS.
GUARANTEED!

SRI INCLUDES PEACE OF MIND WITH YOUR NEW HOME!

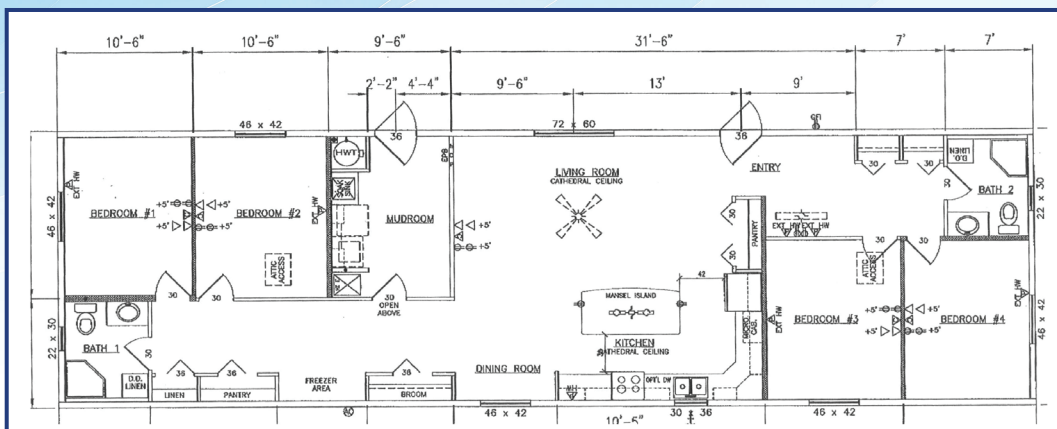
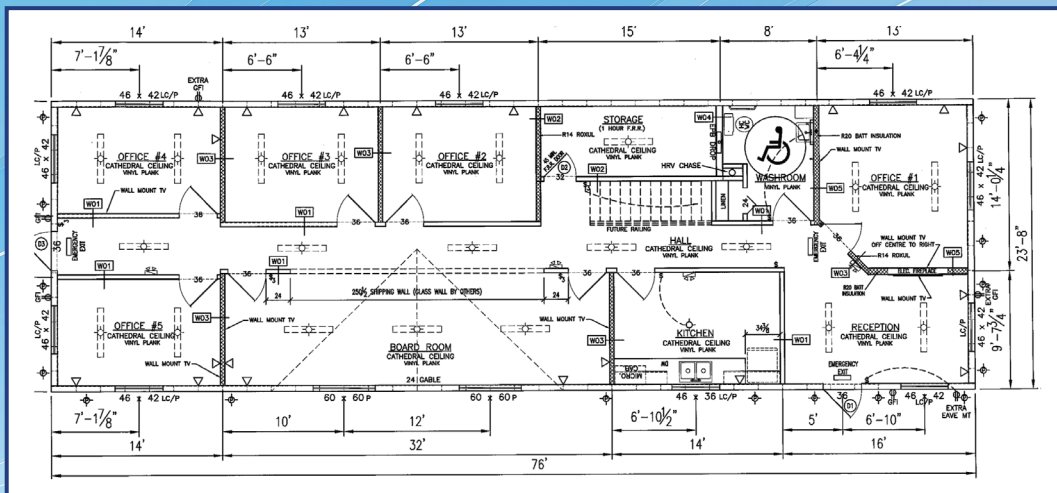
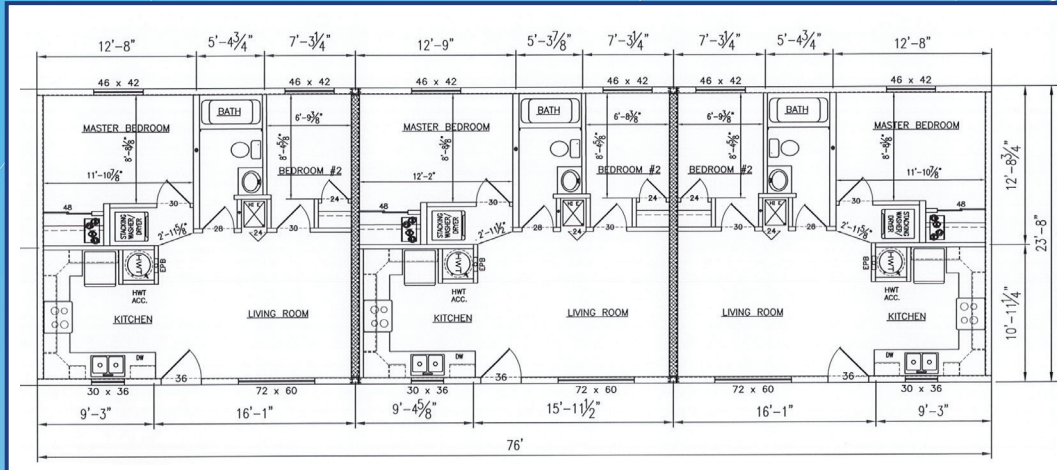
1 YEAR
HOMEOWNERS INSURANCE

10 YEAR
WARRANTY

VIEW MORE
PICTURES AND
VIDEOS OF OUR
SHOWHOMES
ONLINE TODAY!



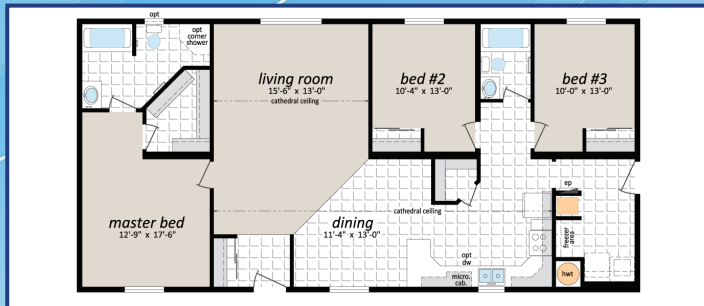
CUSTOM PROJECTS: TRIPLEX, DUPLEX, OFFICES



SAVE \$5000 ON ANY HOME ORDERED BEFORE MAY 31ST
 USE THE CREDIT TOWARDS OPTIONS, SKIRTING, DECKS, OR DISCOUNTS!



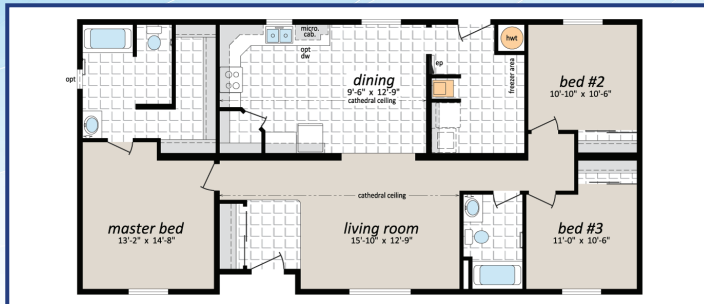
MULTI SECTION SERIES SECTIONAL HOMES



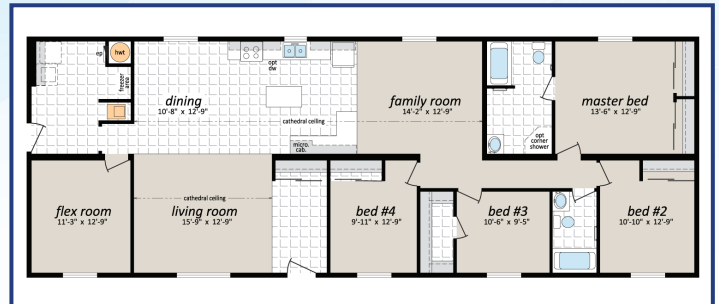
MS-2853
 1540 SQ.FT. 28'x56'



MS-2861
 1705 SQ.FT. 28'x62'



MS-2855
 1540 SQ.FT. 28'x56'

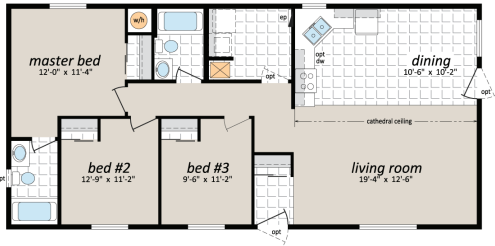


MS-2865
 2090 SQ.FT. 28'x76'

24' WIDE RTM SERIES READY TO MOVE



Proudly Canadian!



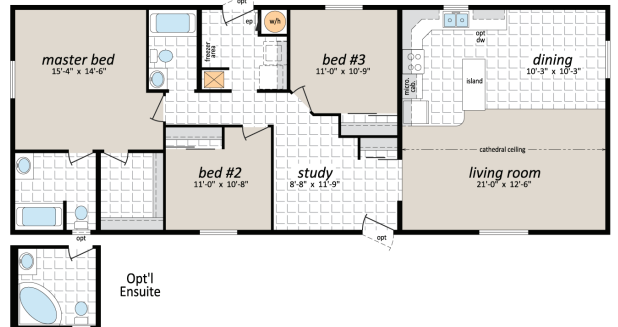
RTM-24003
1200 SQ.FT. 24'x50'



RTM-24001
1536 SQ.FT. 24'x64'



RTM-24037
1728 SQ.FT. 24'x72'

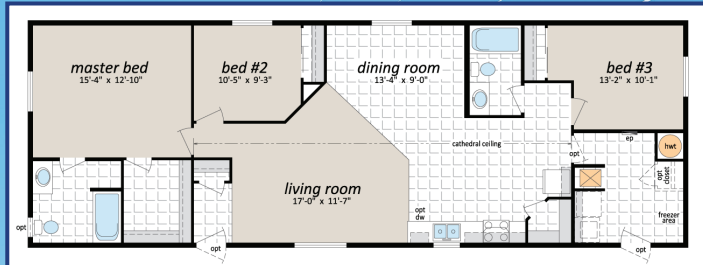


RTM-24011
1488 SQ.FT. 24'x62'

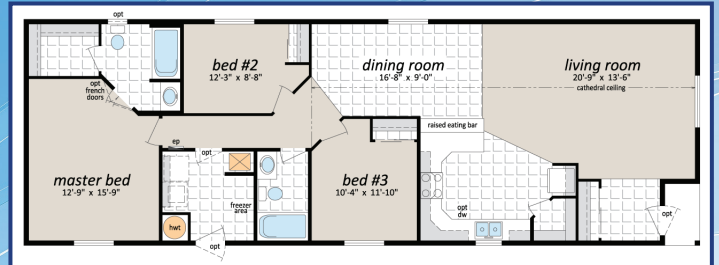
CJS SERIES 22' WIDE HOMES



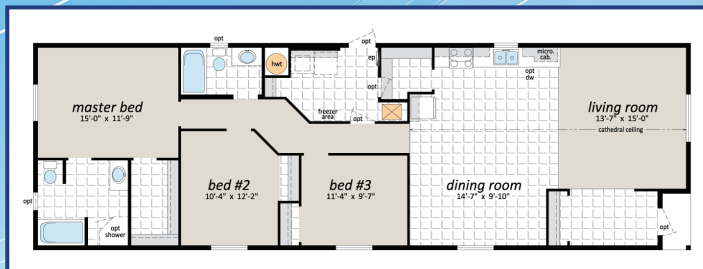
SAVE \$5000 ON ANY HOME ORDERED BEFORE **MAY 31ST**
 USE THE CREDIT TOWARDS OPTIONS, SKIRTING, DECKS, OR DISCOUNTS!



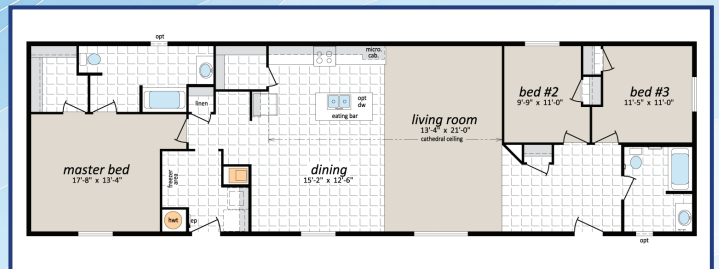
CJS-2206
 1408 SQ.FT. 22'x64'



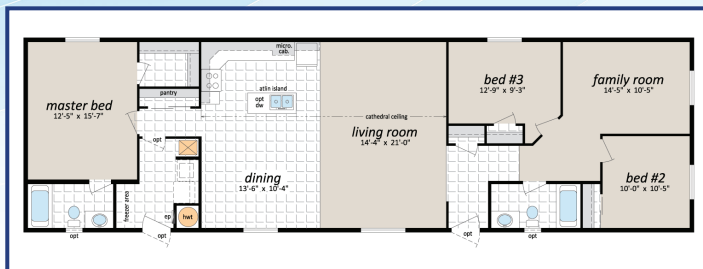
CJS-2208
 1452 SQ.FT. 22'x66'



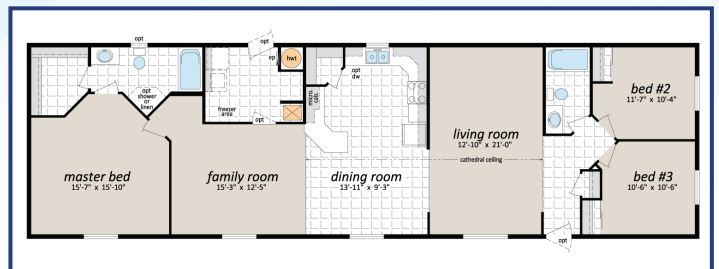
CJS-2210
 1540 SQ.FT. 22'x70'



CJS-2235
 1672 SQ.FT. 22'x76'

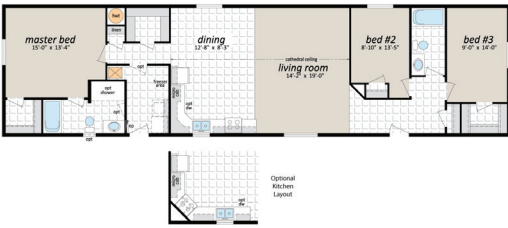


CJS-2216
 1672 SQ.FT. 22'x76'



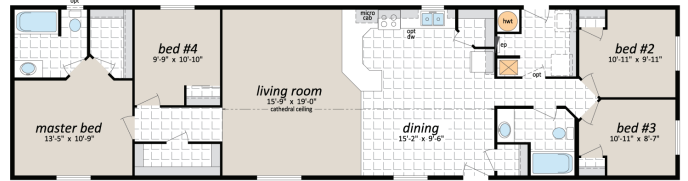
CJS-2212
 1672 SQ.FT. 22'x76'

CJS SERIES 20' WIDE HOMES



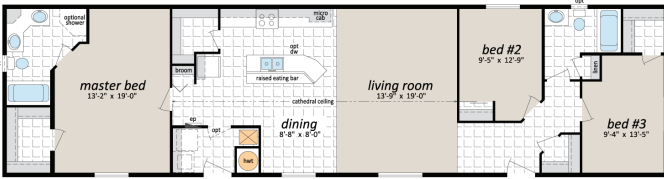
CJS-3022

1520 SQ.FT. 20'x76'



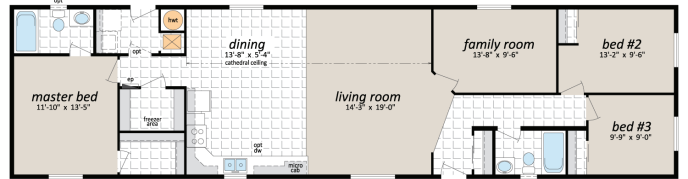
CJS-3014

1520 SQ.FT. 20'x76'



CJS-3019

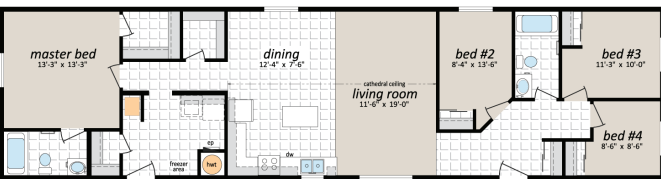
1520 SQ.FT. 20'x76'



CJS-3013

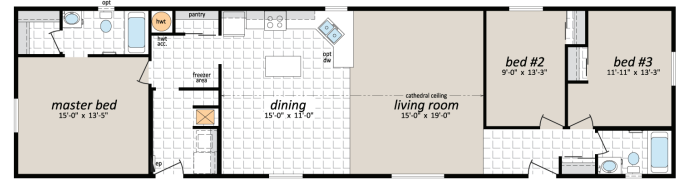
1520 SQ.FT. 20'x76'

SOUTHWOOD II 20' WIDE HOMES



SII-230

1520 SQ.FT. 20'x76'



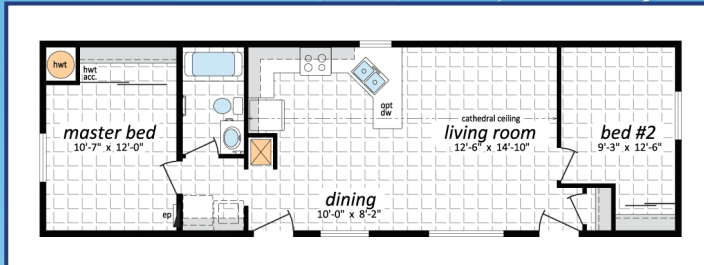
SII-224

1520 SQ.FT. 20'x76'

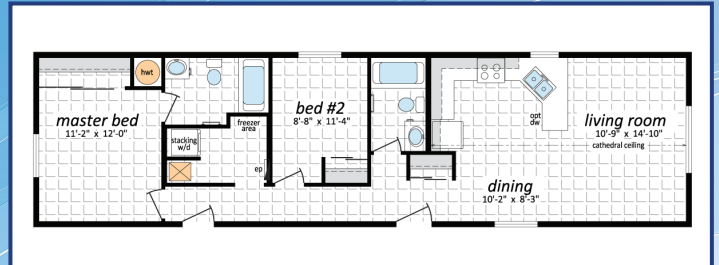
NORTHWOOD II SERIES 16' WIDE HOMES



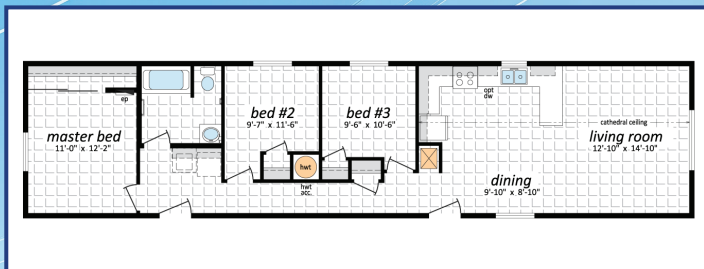
SAVE \$5000 ON ANY HOME ORDERED BEFORE **MAY 31ST**
 USE THE CREDIT TOWARDS OPTIONS, SKIRTING, DECKS, OR DISCOUNTS!



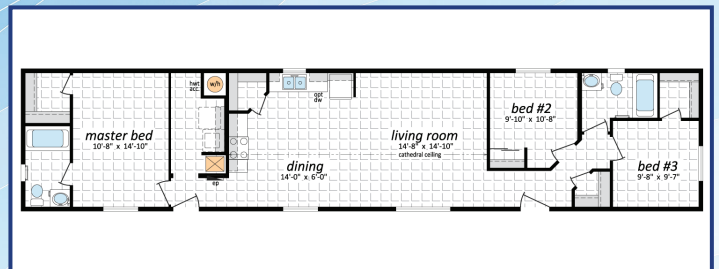
NII-9
 832 SQ.FT. 16'x52'



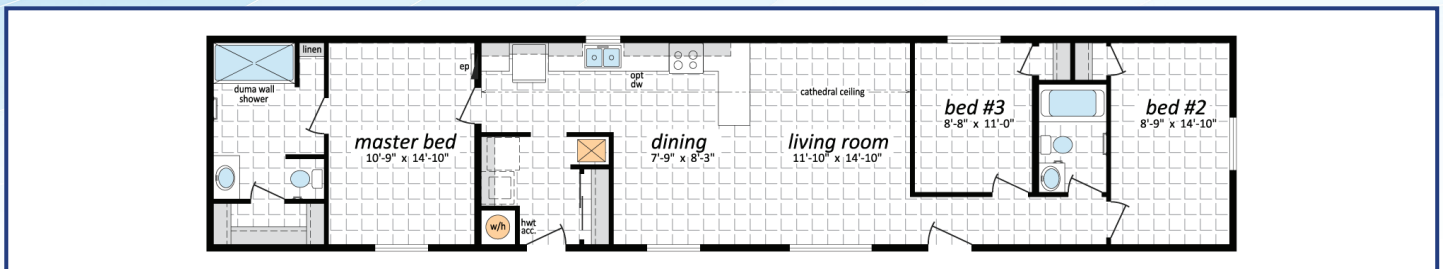
NII-10
 960 SQ.FT. 16'x60'



NII-15
 1088 SQ.FT. 16'x68'



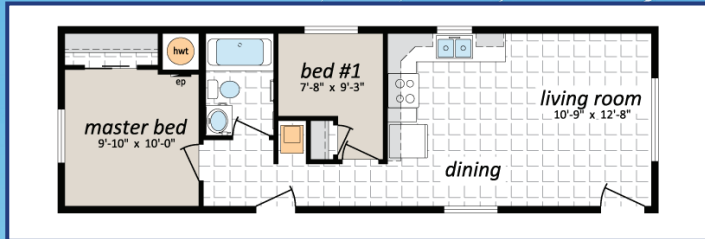
NII-23
 1216 SQ.FT. 16'x76'



NII-27
 1216 SQ.FT. 16'x76'

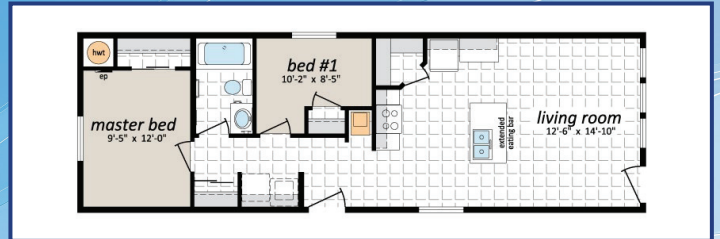
ARBOUR COTTAGE SERIES

AVAILABLE IN 14'-24" WIDE HOMES



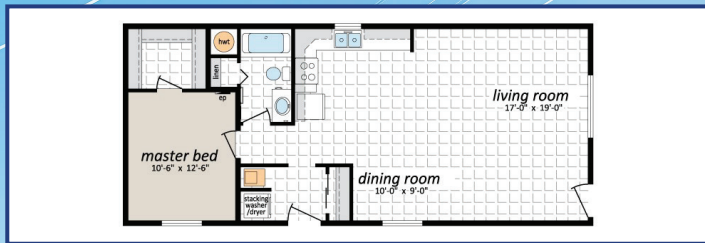
THE FRASER

616 SQ.FT. 14'x44'



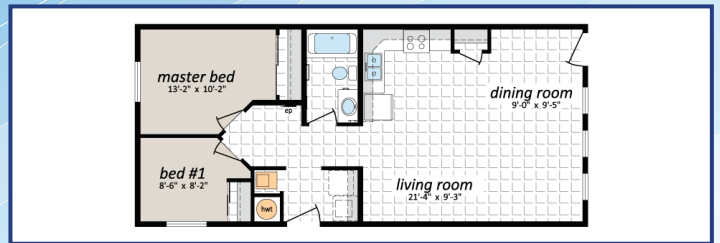
THE DOUGLAS

800 SQ.FT. 16'x50'



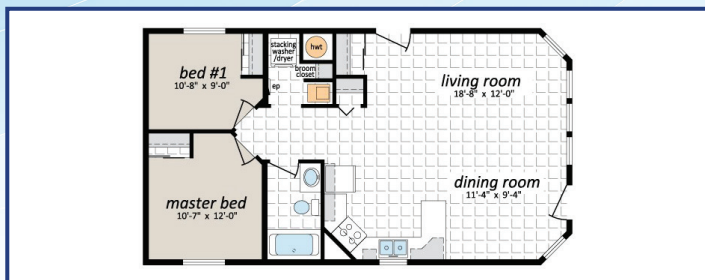
THE ASPEN

920 SQ.FT. 20'x46'



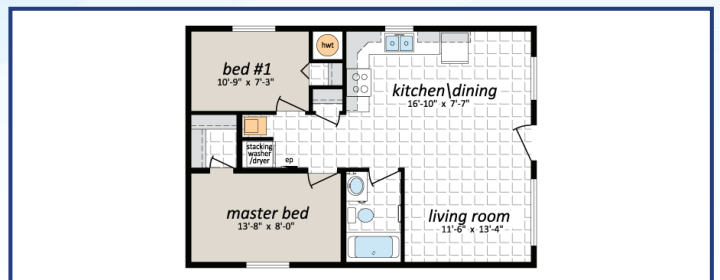
THE MONTEREY

880 SQ.FT. 20'x44'



THE PEPPERIDGE

880 SQ.FT. 22'x40'



THE LODGEPOLE

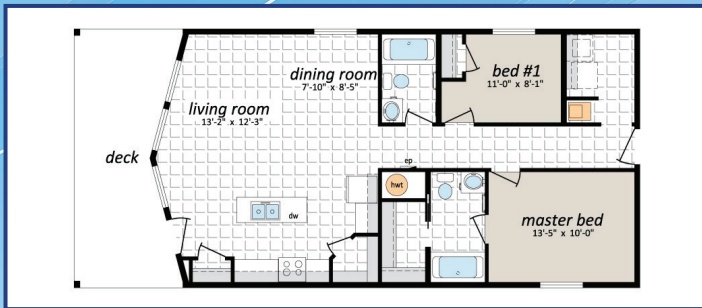
704 SQ.FT. 22'x32'



ARBOUR COTTAGE SERIES 24' WIDE HOMES

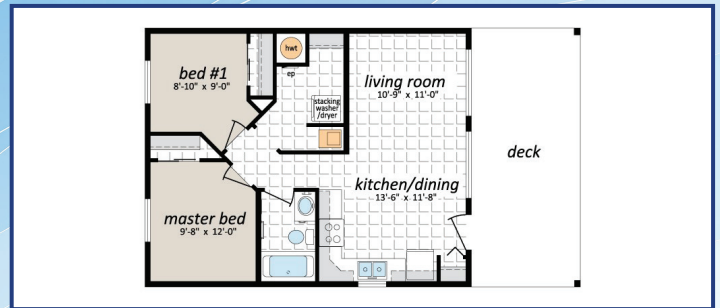


SAVE \$5000 ON ANY HOME ORDERED BEFORE **MAY 31ST**
USE THE CREDIT TOWARDS OPTIONS, SKIRTING, DECKS, OR DISCOUNTS!



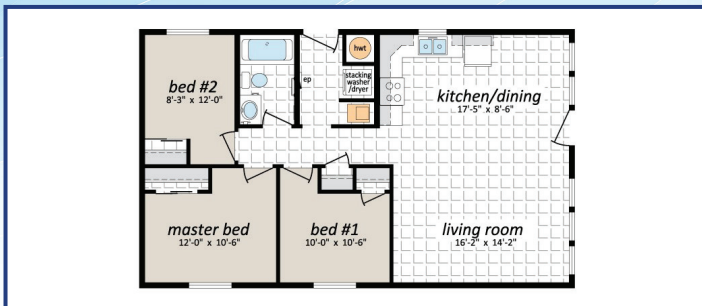
THE COTTONWOOD

1248 SQ.FT. 24'x52'



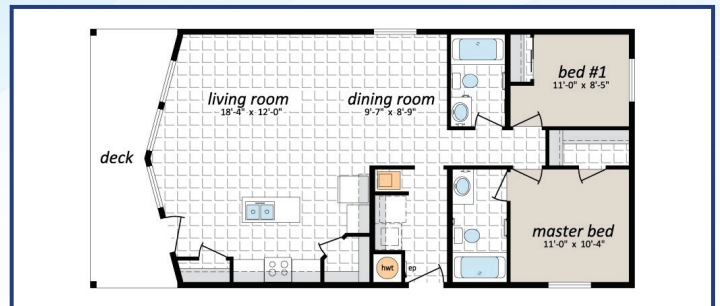
THE SEQUOIA

960 SQ.FT. 24'x40'



THE WILLOW

960 SQ.FT. 24'x40'



THE MAPLE

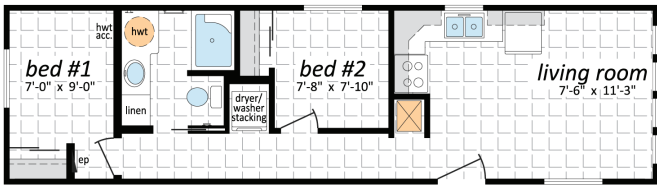
1200 SQ.FT. 24'x50'

THOMAS HOMES & RV CENTER

TRANQUILITY PARK MODEL SERIES

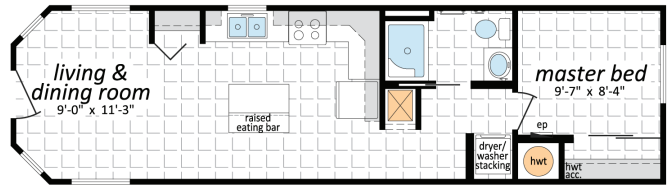


PARK MODEL SERIES OFFER YOU THE ABILITY TO STAY IN A TINY HOME AWAY FROM HOME IN THE WARMER SEASON. BUILT Z241 CODE (3 SEASON)



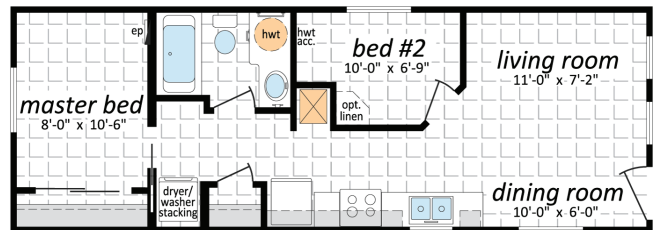
WATERTON

528 SQ.FT. 12'x44'



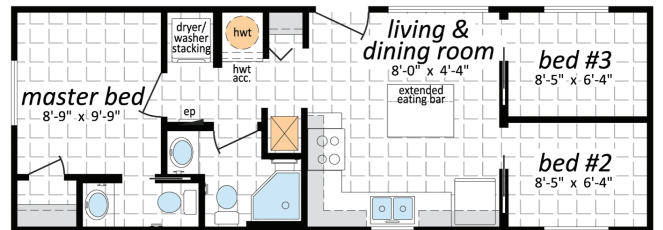
ATHABASCA

528 SQ.FT. 12'x44'



KOOTENAY

546 SQ.FT. 14'x39'



SYLVAN

546 SQ.FT. 14'x39'