



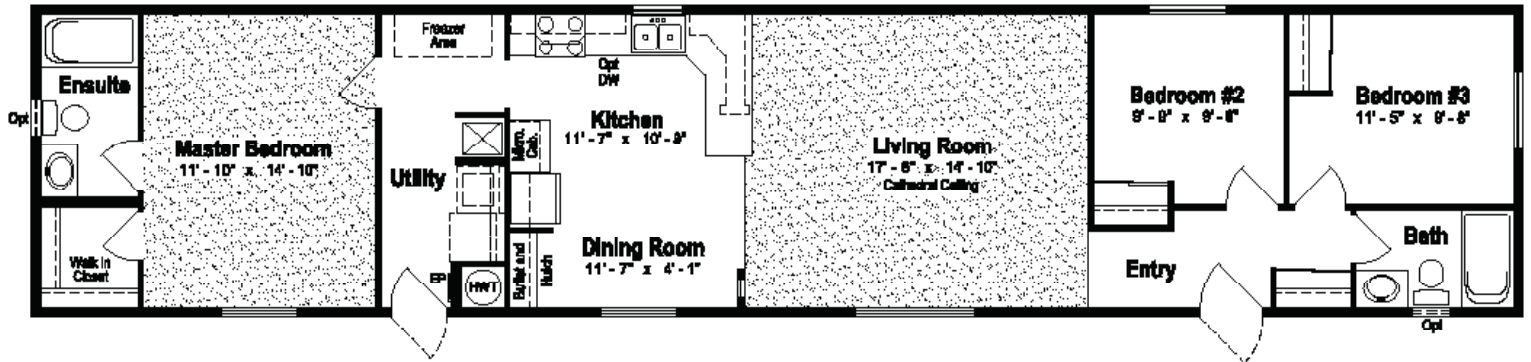
# SAVILLE SOMERSET

Single Section and Sectional Homes

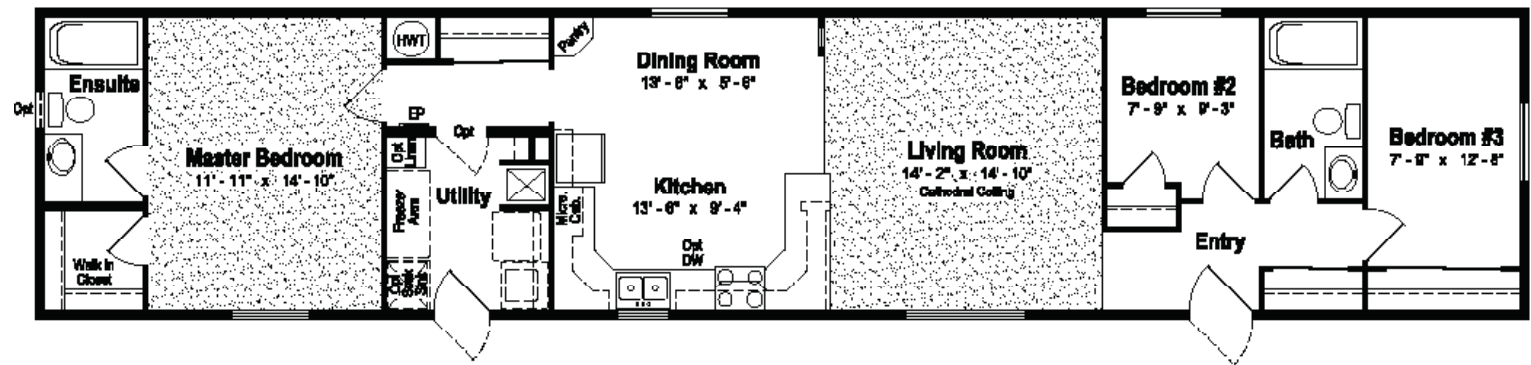


# THE SAVILLE SOMERSET SERIES

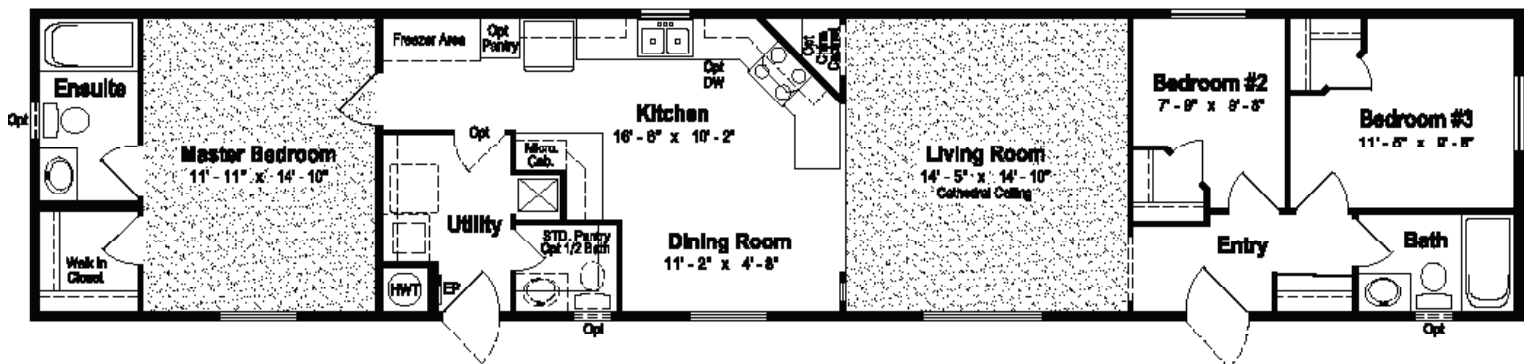
SP-1000A, 16' x 76', 1,216 SQ. FT.



SP-1005A, 16' x 76', 1,216 SQ. FT.

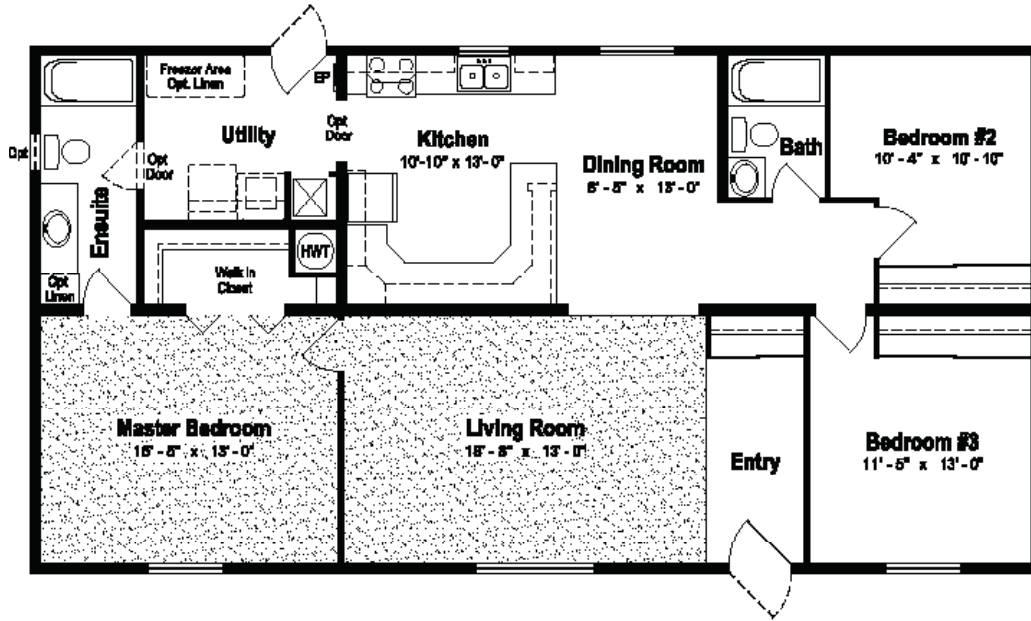


SP-1006A, 16' x 76', 1,216 SQ. FT.



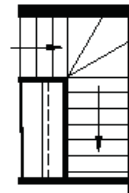
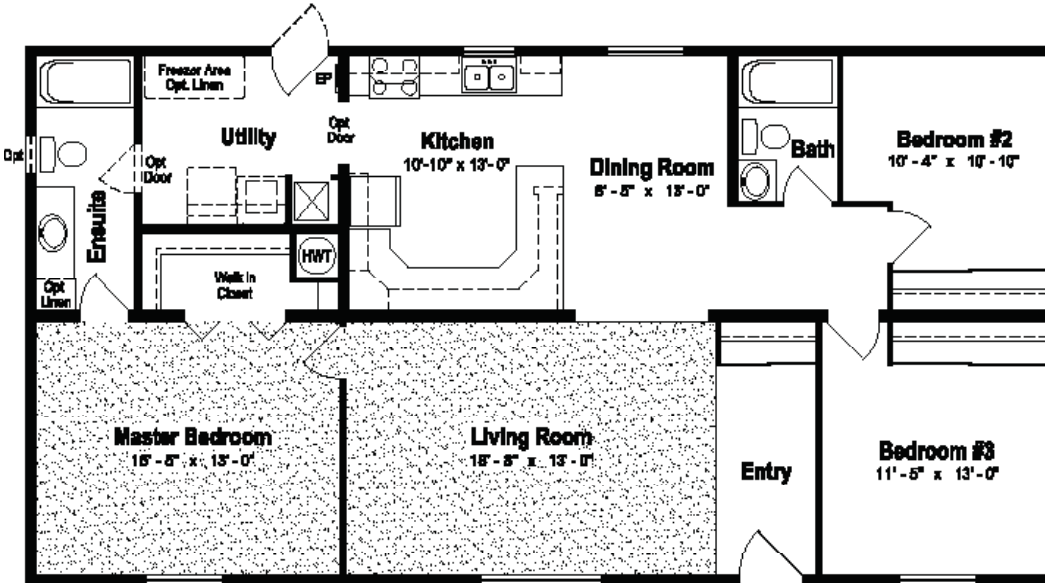
# THE SAVILLE SOMERSET SERIES

SP-1200A, 16' x 76', 1,216 SQ. FT.



# THE SAVILLE SOMERSET SERIES

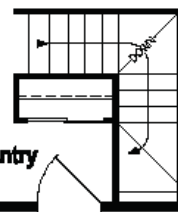
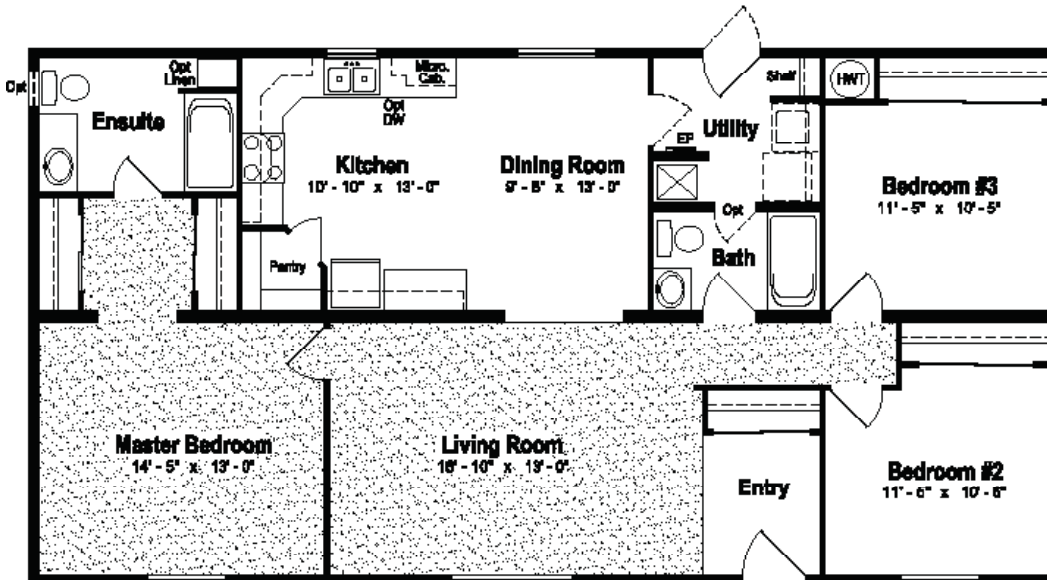
SP-1204A, 27'6" x 52', 1,430 SQ. FT.



Proposed Stairway Location for Optional Foundation Model

Entry

SP-1206A, 27'6" x 60', 1,650 SQ. FT.



Proposed Stairway Location for Optional Foundation Model

Entry

# Standards and Specifications



For over **30** years, **SRI** has been providing Canadian families with **attractive affordable housing** that now totals over 25,000 homes. Not only is your SRI Home warranted for one year on materials and workmanship, your SRI home also carries a **10 year structural warranty**.

The Saville Somerset Series

## Exterior

- Maintenance Free Vinyl Siding and Corners
- Colour Coordinated Painted Wood Fascia
- Vinyl Shutters on front and end of home
- 25 year Shingles
- 4/12 Pitch Roof
- Insulated Steel Exterior Doors with Peephole & Deadbolt - 36" at Front and 32" at Rear
- 2x6 Exterior Walls with Belt Rails, 16" O.C.
- 2 x 10 Floor Joists - Single Section Homes and Foundation Models
- 2 x 8 Floor Joists - Sectional Homes
- Engineered Roof Trusses
- Weatherproof GFI Protected Receptacle
- Exterior Frost Free Tap with Check Valve
- Coach Light at All Exterior Doors
- Lever Handle Doors
- PVC Windows complete with Screens
- Separate Receptacle for Heat Tape
- Residential Eaves (4 Sides)
- 7/16" Roof Sheathing

## Interior

- Cathedral Ceiling throughout in Sectional Homes and in Living Room, Dining Room and Kitchen in Single Section Homes
- Decorative Vinyl Covered Drywall
- Insulation Values=R-34 in Ceiling, R- 20 in Side Walls and R-28 in Floors
- Satin Platinum Hardware, Lighting and Plumbing Fixtures
- 1" Venetian Blinds on all Windows
- Valances on all Windows
- 5/8" Subfloor-Glued, Nailed and Screwed
- Stainmaster Carpet in Living Room and Master Bedroom (And Hall in Sectional Homes)
- No wax Quality Vinyl Floor Covering
- Solid Shelving in all Closets
- White Receptacles and light Switches
- Ceiling Lights in all Bedrooms

## Kitchen

- 18 cu. ft. Frost Free Refrigerator
- 30" Electric Range with Clock and Timer
- 2-Speed White Rangehood Fan with Light-Vented to Exterior
- White Kitchen Appliances - Black Optional
- Single Lever Kitchen Faucet with Sink Spray
- Shaker Modular Cabinets with Backs
- Laminated Countertops with 6" Laminate Backsplash with Bullnose (Kitchen and Baths)
- Crown Moulding
- Microwave Cabinet with Separate Circuit
- Double Stainless Steel Sink
- Roller Door slides on all Drawers

## Bathroom

- Tub/Shower Complete with Single Lever Pressure Balanced Faucet
- Single Lever Faucet at Vanity Sink
- Shower Head in All Bathrooms
- Shower Rods and Shower Curtain in All Bathrooms
- Exhaust Fan complete with Humidistat in Main Bath
- Exhaust Fan in Ensuite on Separate Switch
- Cosmetic box in Main Bath
- White Bathroom Fixtures
- GFI Protected Receptacle

## Utilities

- 33 Imperial Gallon (40 U.S. Gallon) Electric Water Heater
- Natural Gas Furnace with Electronic Ignition
- Life Saving Smoke Detector(s)
- Dryer Vent Rough In
- Plumbed and Wired for Washer and Dryer
- Overhead Solid Shelf at Washer and Dryer Area
- 100 amp. Service Panel
- Electric Conduit through Floor
- Copper Wiring Throughout
- Built to Meet or Exceed Applicable Provincial Codes

# Optional Features

## Exterior

- Shutters (Two Styles)
- Diamond Cut Ceilings
- Three and Four Light Bay Windows
- Palladian Windows
- Octagon Windows
- Acrylic Block Windows
- White or Pewter Lattice in Windows
- Skylights
- Patio, Garden Doors and Cottage Doors
- Storm Doors
- Exterior Door with Half Round, 9 Lite or Franklin Insert
- Turbine Vents
- Electric Door Chimes
- Exterior Recessed Pot Light(s)
- Extra Exterior GFI
- High Snow Load Roof
- 8' Sidewalls

## Interior

- Fully Finished Drywall
- Media Room Package
- Laminate Flooring
- Upgrade Vinyl Floor Coverings
- Berber Carpet
- French Doors
- Mirrored Closet Doors
- Freezer Cabinets
- Soak Sink with Cabinet

- Utility Room Door
- Ceiling Fan with Lights
- Chandeliers
- Recessed Fluorescent Lights
- Mini Tube Under Counter Lighting
- Archways
- 8' Sidewalls

## Kitchen

- Oak, Maple, Cherry or Espresso Raised Panel, Shaker Style or PVC Cabinets  
(Some restrictions apply)
- Wand Style Deluxe Single Lever Kitchen Faucet
- Corner Glass Cabinet Doors
- Island Work Centre
- Appliance Garage
- Planning Centre
- Lazy Susan
- Granite Composite Upgrade Sink
- Oak or Maple Counter Edging
- Corian Executive Counter Edging
- Black Appliances
- Built-In Dishwasher
- Combination Microwave/ Range Hood
- Eye Level Oven and Cook Top Range

- Self Cleaning Range
- Two Door Side by Side Refrigerator
- Free Standing Bottom Mount Refrigerator

## Bathroom

- 72" Tub/Shower
- Corner Oval Jetted Tub
- 2 Person Jetted Tub
- 36", 48" or 60" Shower c/w Glass Doors
- Handicap Toilet
- Tri-Mirror Medicine Cabinet
- Grab Bars
- Deluxe Shower Curtain
- Banjo Countertop on Vanity

## Utilities

- Gas Fireplace c/w Air Circulating Fan
- 40 Gallon U.S. Gas Water Heater
- Forced Air Electric Furnace
- Air Conditioner-Ready Furnace
- Washer and Dryer
- Stacking Washer and Dryer
- Central Vacuum System
- Roughed in for Central Vacuum
- 200 Amp Service Panel
- Extra Telephone Jack(s)



Authorized Retailer:



Intertek

131 STUBB ROSS ROAD . LETHBRIDGE . ALBERTA T1K 7N3

[www.regenthomes.ca](http://www.regenthomes.ca)